

A woman is seen from behind, wearing a wide-brimmed straw hat and a dark dress with a light floral pattern. She is holding a glass of red wine in her right hand and touching the brim of her hat with her left hand. The background is a vineyard with rows of grapevines stretching into the distance. The foreground shows a close-up of green grape leaves.

CANTINE
Riunite & Civi

THE LEADING ITALIAN SPARKLING WINE COMPANY

Company
Profile

AN OUTSTANDING GROUP IN THE WINE SECTOR

Consolidated
turnover
700 mln



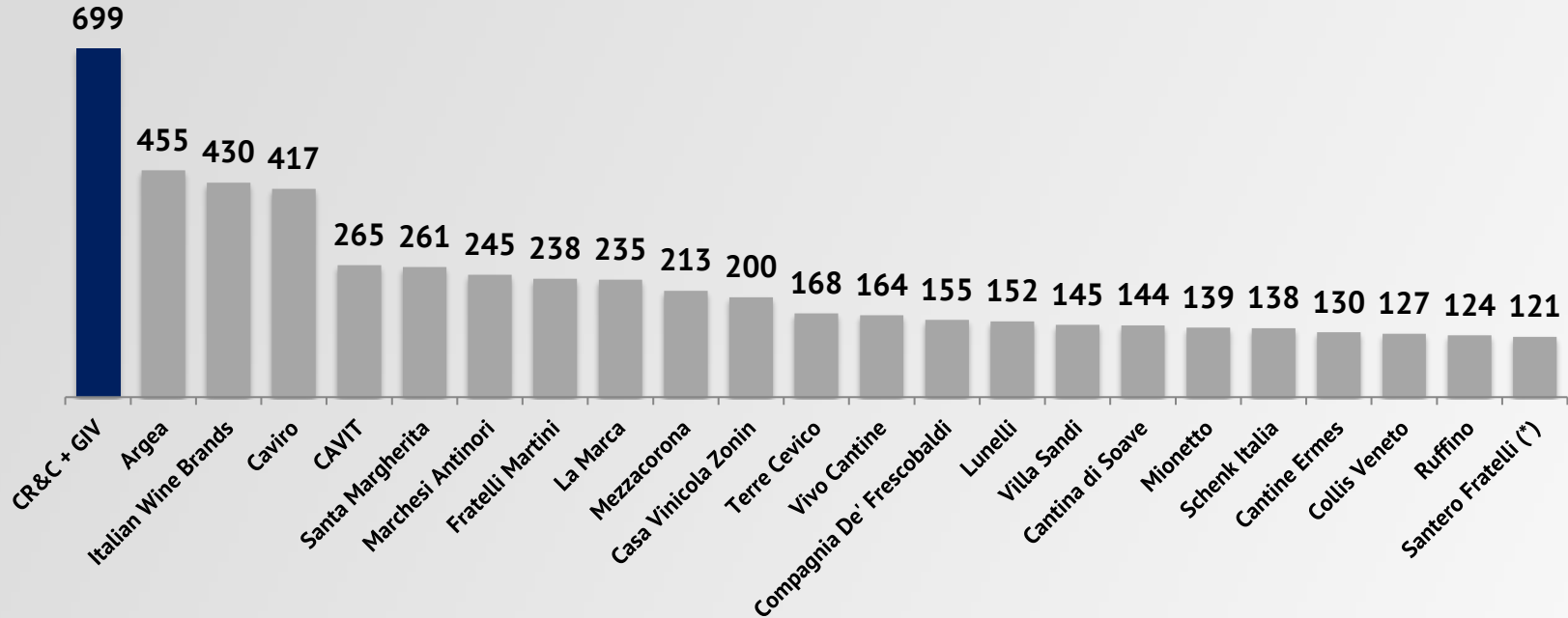
Source: internal data, December 2022



Cantine Riunite & Civ
Owns **99.9%**
of Gruppo Italiano Vini

THE 1ST ITALIAN WINE GROUP

turnover 2021-2022 (mln €)

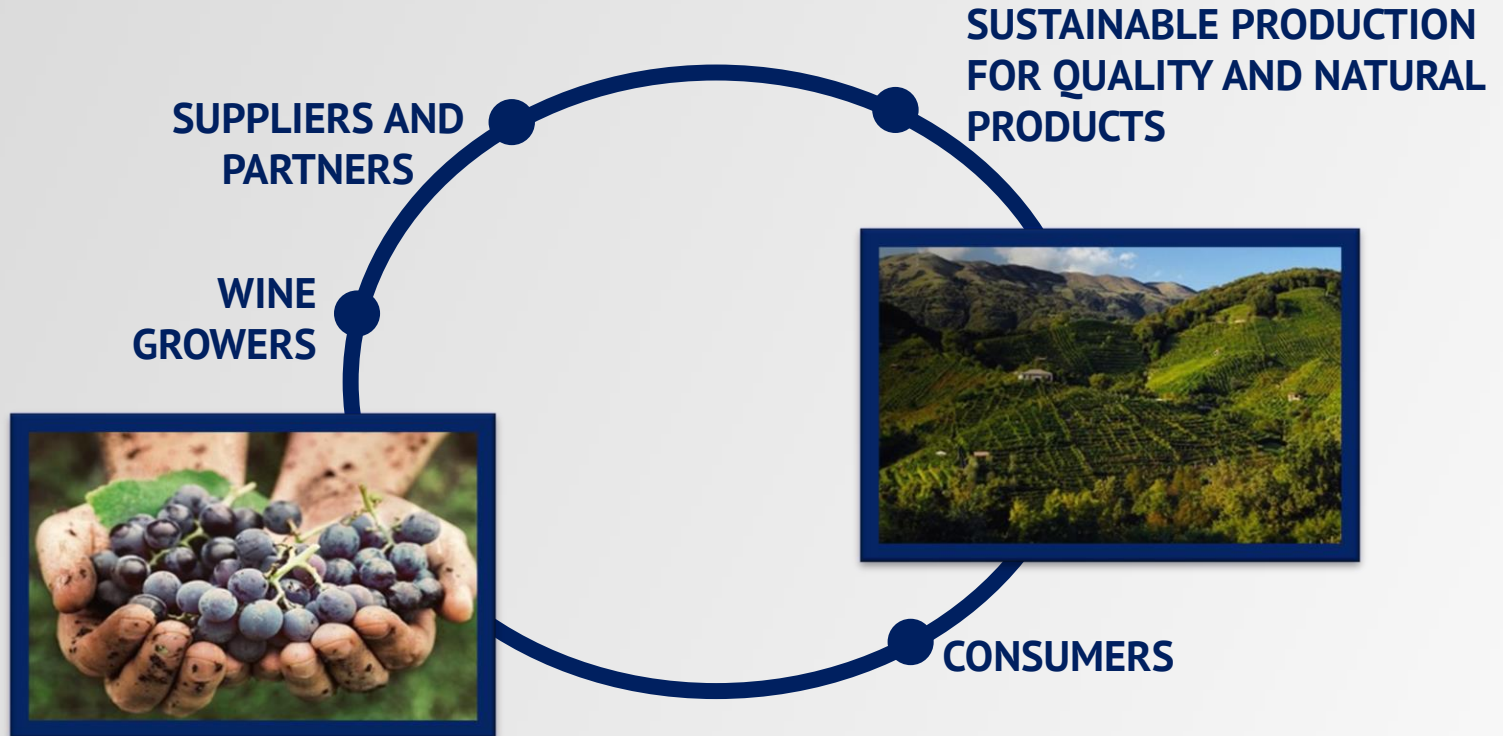


WE ARE A COOP WITH AN INTEGRATED BUSINESS MODEL

To promote a sustainable cooperation in order to achieve the best possible results from the grapes contributed by our members, passing the values and the know-how of the wine growing on to the new generations, while preserving the natural and environmental surroundings in the production areas.

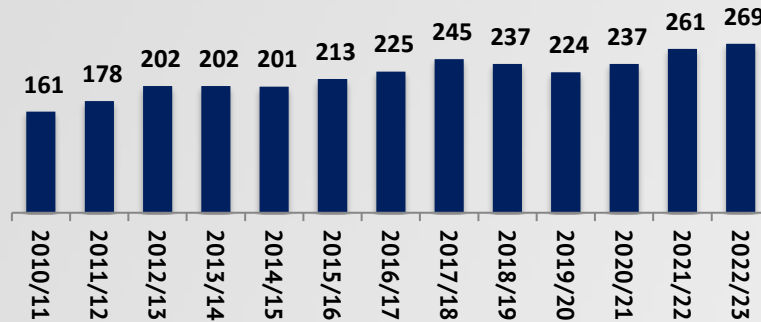


WE HAVE CREATED A STRONGLY INTEGRATED NETWORK

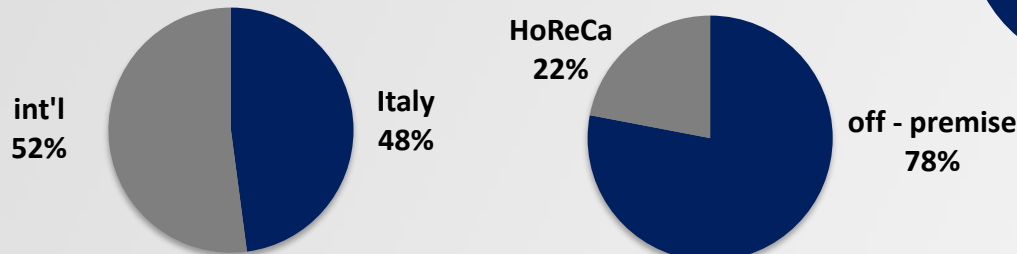


POSITIVE PERFORMANCE OVER THE LAST YEARS, BOTH ON ITALIAN AND INTERNATIONAL MARKETS

turnover - wine sales (mln €)



Turnover 2022/2023 (%)



135 MLN BOTTLES
only bottled wine - 0,75 lt
(average size)

OUR BUSINESS MODEL IS FOUNDED ON A SOLID BASE OF SHAREHOLDERS



1,450 associated winegrowers

- Quality
- Passion

24 cooperative wineries

- Care for the product
- Integrated value / production chain



**4,600 ha vineyard.
Over 76,000 tons grapes**

- Lambrusco Salamino
- Lambrusco Grasparossa
- Lambrusco di Sorbara
- Grechetto Gentile
- Montuni
- Lancellotta
- Glera
- Pinot Blanc, Pinot Gris, Pinot Noir, Incrocio Manzoni, Verduzzo

AN INTEGRATED PRODUCTION SYSTEM GUARANTEES PRODUCT QUALITY AND TRACEABILITY



8 winemaking centres

Albinea Canali
Correggio
Campagnola Emilia
Argine
Castelvetro
Castelfranco Emilia
San Marino di Carpi
Visnà



3 bottling plants

Campegine (Reggio Emilia)
San Prospero (Modena)
Visnà (Treviso)

Certified company management system

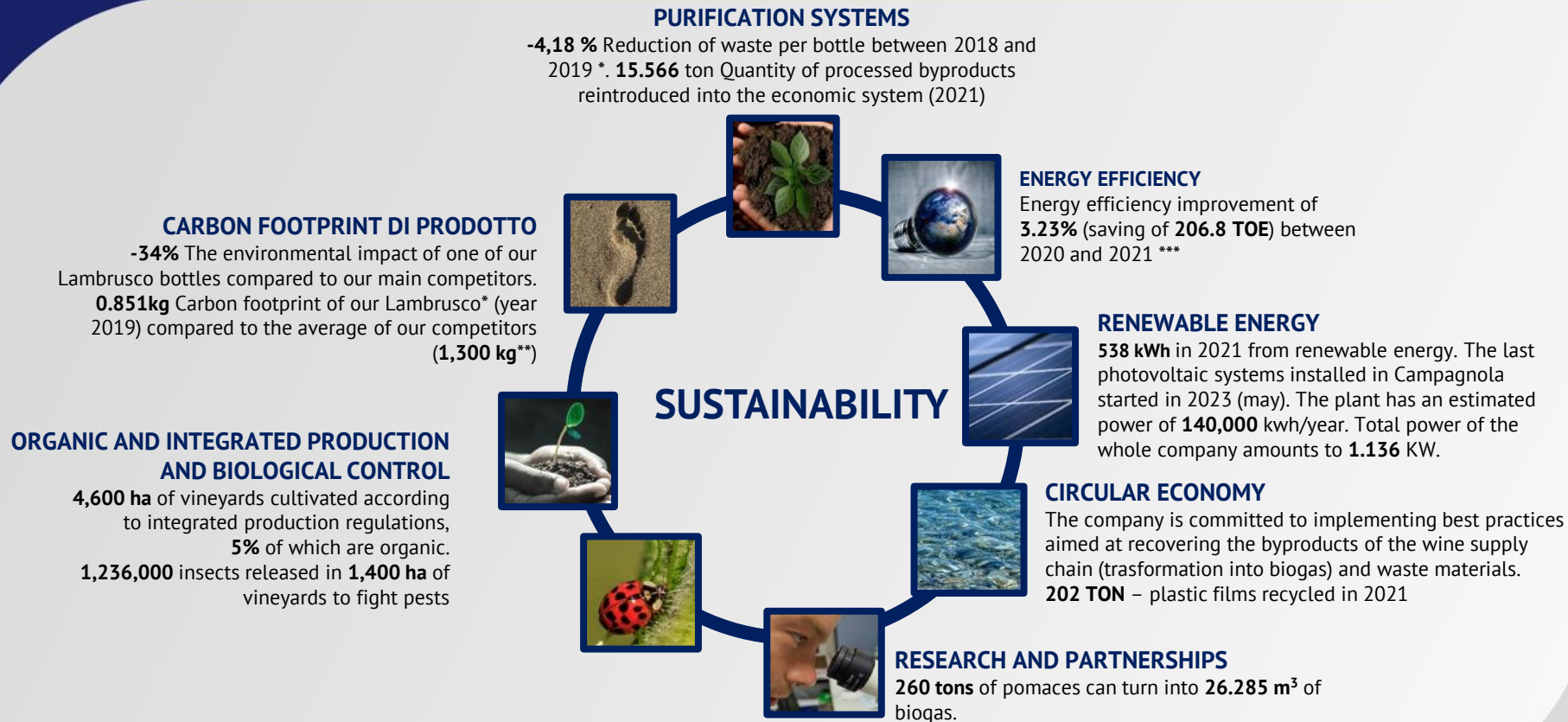


Cantine Maschio

3 BOTTLING PLANTS WITH LARGE PRODUCTION AND WAREHOUSING CAPACITY



		Campegine (Reggio Emilia)	San Prospero (Modena)	Visnà di Vazzola (Treviso)
Surface	<i>total</i>	› 75k m ²	› 42k m ²	› 51k m ²
	<i>covered</i>	› 33k m ²	› 16k m ²	› 16,7k m ²
Production Capacity	<i>installed</i>	› 600k hl	› 250k hl	› 300k hl
	<i>actual</i>	› 500k hl	› 215k hl	› 280k hl
	<i>By pack size</i>	› small: 20.000 btl/h	› 0,75l: 12.000 btl/h	› 0,20l: 13.000 btl/h
		› 0,75l: 15.000 btl/h	› 1,5 l: 9.000 btl/h	› 0,375: 2.000 btl/h
› 1,00l: 12.000 btl/h		› kegs: 100 pz/h	› 0,75l: 15.000 btl/h	
› 1,50l: 12.000 btl/h			› 1,50l: 2.000 btl/h	
Warehousing Capacity	<i>Wine tanks</i>	› 185k hl	› 112k hl	› 204k hl

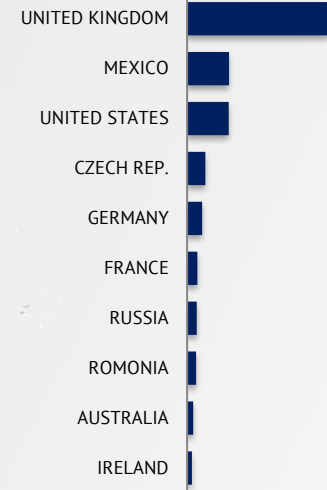


* Data from CR&C Environmental Declaration – update 31/03/2020. **Source: Il Corriere Vinicolo n.2 of 20 Jan 2020, pag 22,23 ***Source: ENEA 2021

SERVING MILLIONS OF CONSUMERS IN OVER 90 COUNTRIES



**TOP Export Country
(2022/2023 turnover)**



OFFERING A COMPLETE RANGE OF WINES

Riunite



ALBINEA CANALI
VITICOLTORI DAL 1930



CAVICCHIOLI
VITICOLTORI DAL
1928



CANTINE
MASCHIO



MASCHIO DEI CAVALIERI



CIV & CIV
VIGNE E VINI



RIGHI



GAETANO
RIGHI



**BELLA
TAVOLA**



SERVATO BASTA
QB



CELLA



CANTINE
Riunite&Civ

CANTINE RIUNITE & CIV SOC. COOP. AGR.

Via G. Brodolini, 24 - 42040 Campegine (RE) - Italia

Tel. +39 0522 905711 - Fax +39 0522 905777

info@riuniteciv.it - www.riuniteciv.com

THE LEADING
ITALIAN
SPARKLING
WINE
COMPANY